

Coral



Estate

WELCOME TO CORAL ESTATE.

OUR VISION IS TO PROVIDE AN EXCELLENT SERVICE FOR
RETIREMENT VILLAGE LIVING.

RSL Care WA is committed to being the State's leader in high-quality retirement village living.

We seek to achieve this in a range of residential and community settings, of which Coral Estate is one.

As you'll soon discover, the community caters for a broad spectrum of retirement village living, from all walks of life and we adhere strongly to the following values:

- We believe in maintaining a caring community of interest offering a wide range of services.
- We listen to the individuals within the Village in order that we can satisfy their needs fully as best we're able.
- We hold to the view that our services must always be excellent, if not exemplary.
- At all times we work to achieve industry best

practice and perform a market-leader role in every area of endeavour.

- We maintain that everything we do should be achieved by utilising resources efficiently with the help of the most highly skilled employees and volunteers we can attract; and
- We also have a profound belief in the importance of encouraging mateship and a genuine sense of community.

Access and equity are hallmarks of our approach to running the Village and all our policies and activities are transparent to ensure the Coral Estate management team is totally accountable, at all times.

This document will introduce you to the lifestyle you can choose to enjoy here.

You'll love it.



Coral Estate

EVERYTHING YOU NEED IS HERE OR VERY CLOSE BY.

Coral Estate is conveniently located in the booming coastal town of Mandurah which is increasingly becoming Western Australia's favourite holiday destination.

The Village is close to Pinjarra Road and the Mandurah Bypass so access to all the local facilities and Perth and Bunbury is very easy.

Within minutes of the Village you'll find the best that Mandurah has to offer.

You can walk to Centro Shopping Centre, the town's largest, and a huge variety of major department stores.

Mandurah's Aquatic Centre is also a pleasant stroll away, as are several

medical facilities.

And if you follow Pinjarra Road West for two minutes in a car, you'll reach all the waterside cafés, restaurants and shops.

Look at the facilities lifestyle you'll enjoy here.

The Village's central location makes it the ideal, safe and secure base for taking full advantage of the huge array of surrounding community resources and social and sporting clubs.

Outstanding security and amenities.

Your security and peace of mind are our concern.

Your Villa will have:

1. An emergency call system.
2. 24-hour monitoring.
3. A smoke detector.
4. Security locks to all opening windows.
5. Security doors.
6. A wheelchair-friendly design.

To enable you to stay in your home longer, RSL Care WA offers personal care through their community care packages.

Naturally, further details can be provided on request.

All you have to do is ask.

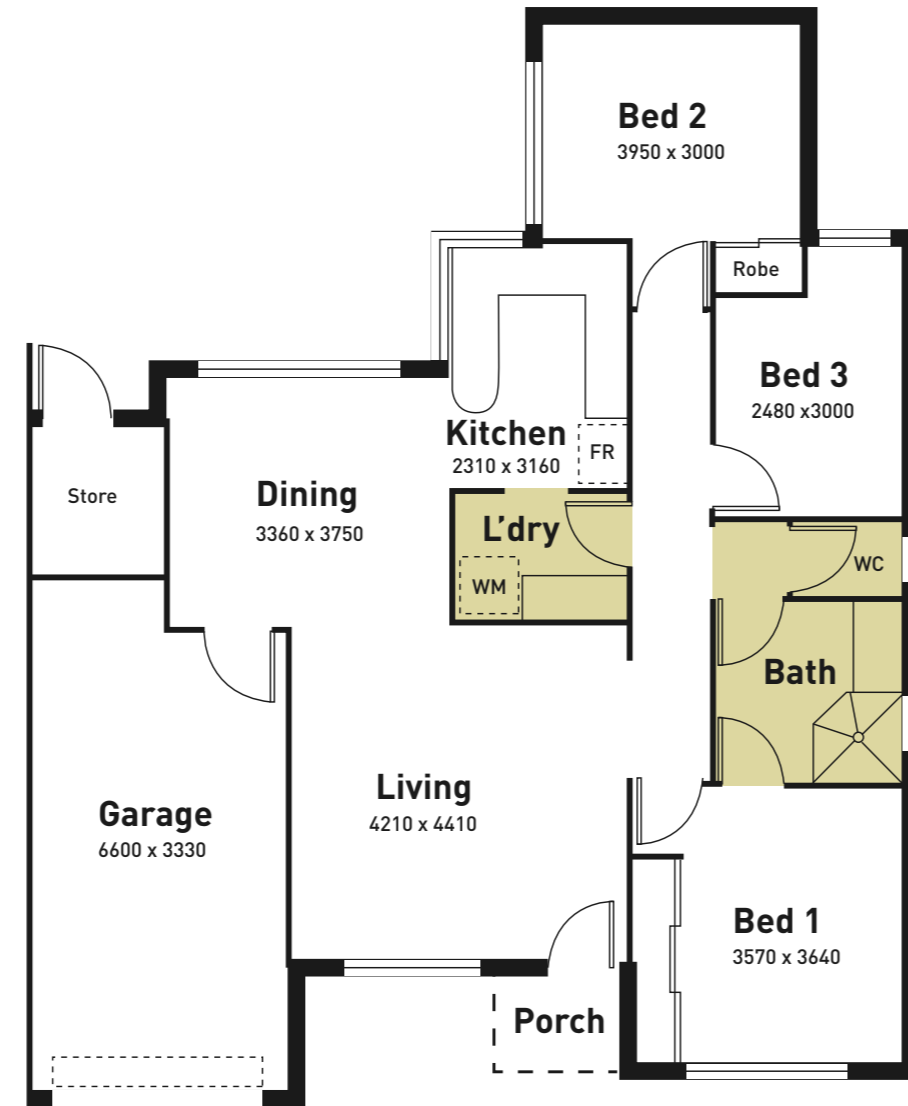


CORAL ESTATE HOME TYPE A.

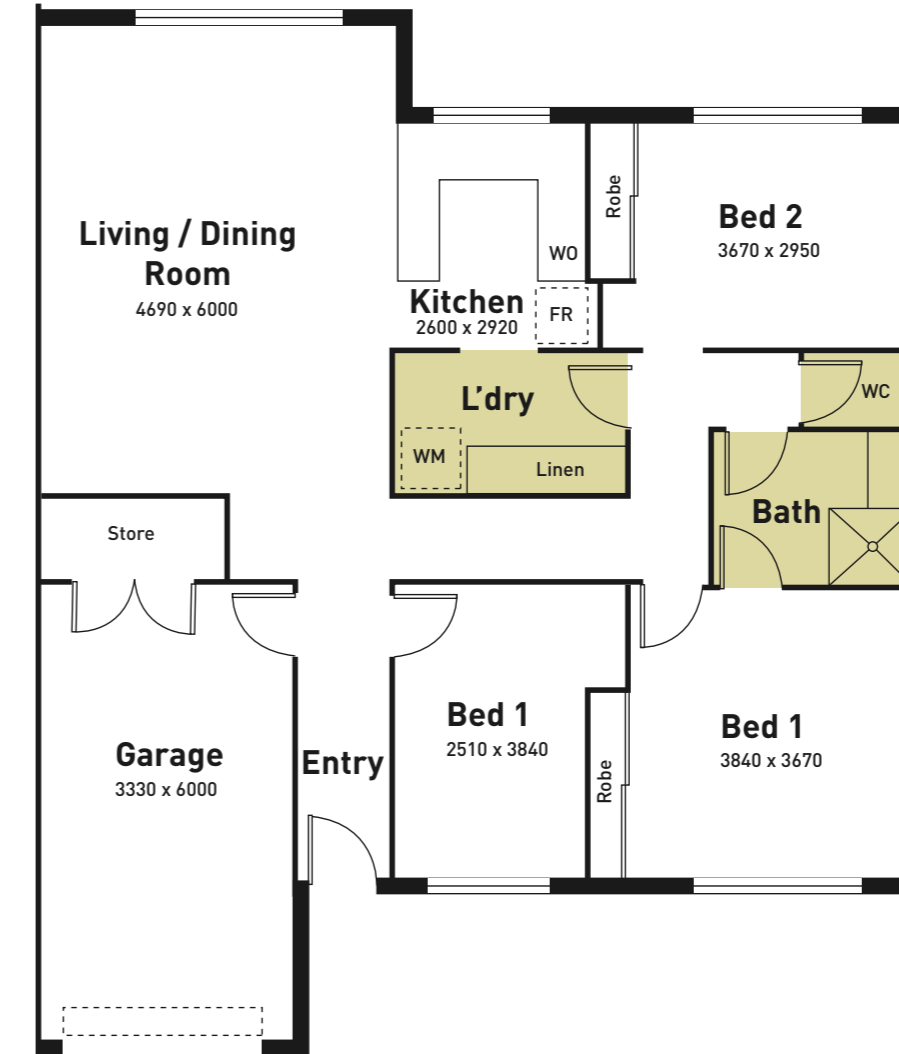
Features of your Coral Estate home:

A modern design with all the convenience you could want.

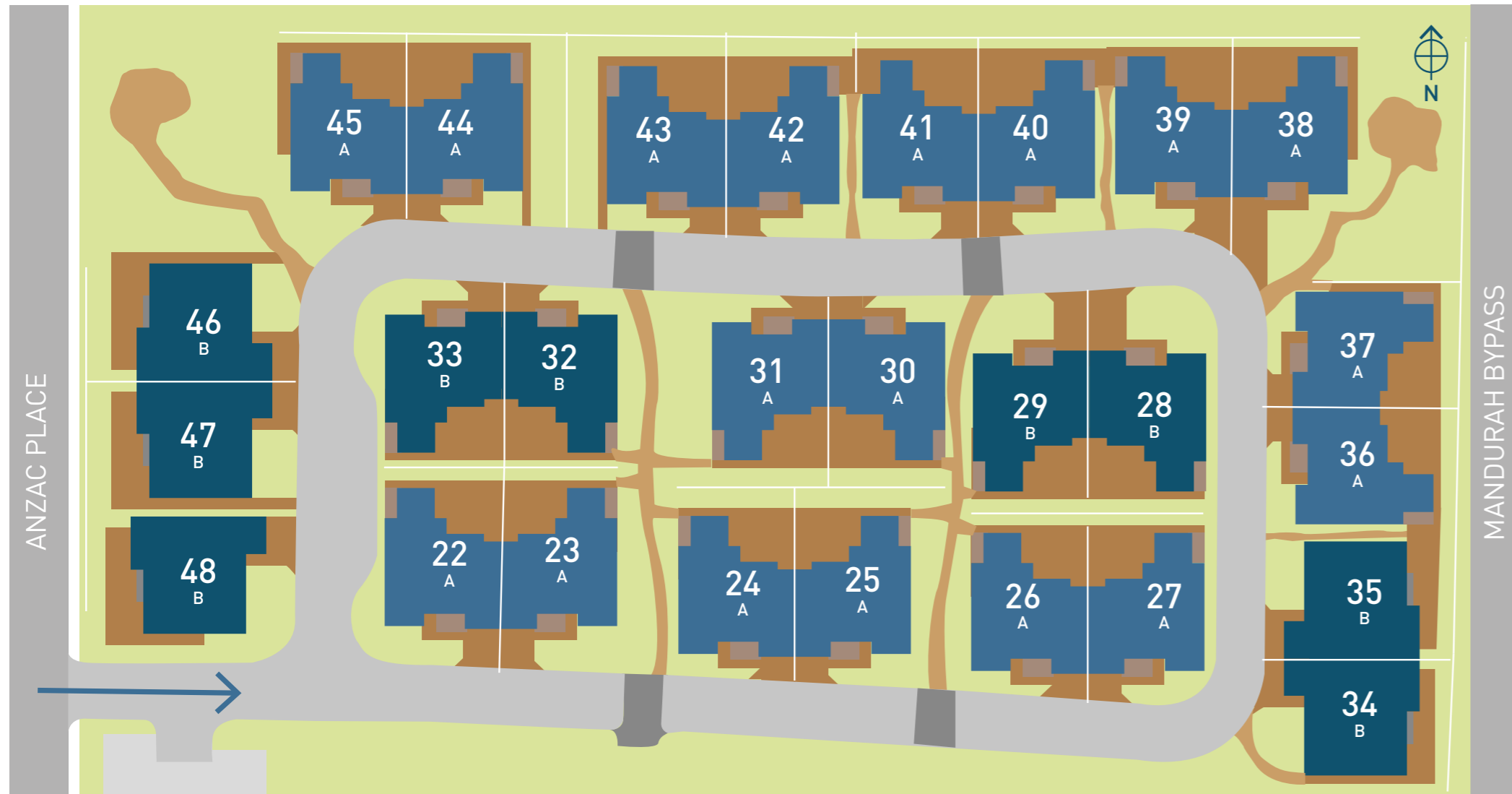
- Reverse-cycle split system air conditioning.
- Roof insulation for year 'round comfort-cool in summer, warm in winter.
- Gas bayonet for winter warmth.
- Economical gas hot water.
- TV and telephone outlets.
- Built-in robes to two bedrooms.
- Floor coverings throughout (tiles and carpet).
- Window treatments (verticals).
- Electric wall oven.
- Gas cook top.
- Ceiling heat lamp to bathroom.
- Kitchen exhaust fan.
- Lots of storage space including kitchen pantry, linen press and store room.
- Generous sized single garage with direct access to the home, remote controlled doors for easy access.
- Paved patio area.
- Folding clothes line.
- Landscaping and reticulation to front of villas and all common areas - maintained for you.



CORAL ESTATE HOME TYPE B.



CORAL ESTATE OVERALL PLAN.



RSL Care WA - Coral Estate

1 Anzac Place, Mandurah WA 6210

Phone: (08) 9535 0200

Fax: (08) 9535 0202

Email: rslman@rslwvh.com

Web: www.rslwvh.com