

Geraldton



Village

WELCOME TO GERALDTON VILLAGE.

OUR VISION IS TO PROVIDE AN EXCELLENT SERVICE FOR THE AGED.

RSL Care WA is committed to being the State's clear leader in high-quality aged care to the ex-service and wider community.

We seek to achieve this in a range of residential and community settings, of which our splendid Geraldton Village is one.

As you'll soon discover, the community caters for a broad spectrum of the aged, from all walks of life and we adhere strongly to the following RSL Care WA values.

- We believe in maintaining a caring community of interest offering a wide range of services.
- We listen to the individuals within the Village in order that we can satisfy their needs as best we're able.
- We hold to the view that our services must always be excellent, if not exemplary.

- At all times we work to achieve industry best practice and perform a market-leader role.
- We maintain that everything we do should be achieved by utilising resources efficiently with the help of the most highly skilled employees and volunteers we can attract.
- And we also have a profound belief in the importance of encouraging mateship and a genuine sense of community.

Access and equity are hallmarks of our approach to running the Village and all our policies and activities are transparent to ensure the Geraldton Village's excellent management team is totally accountable and effective, at all times.

This document will introduce you to the lifestyle you can choose to enjoy here.

You'll love it.



EVERYTHING YOU NEED IS HERE OR VERY CLOSE BY.

Our Geraldton Village is conveniently located between Gregory and Francis Streets, just a kilometre from the Geraldton Central Business District and shopping heart.

Geraldton is Western Australia's 'Sun City' and is located around a scenic four-hour drive north of Perth (or less than an hour by plane).

The Village within this thriving coastal city is also just 750 metres away from the regional hospital.

Geraldton is a booming holiday destination port city which is the focus of the multi-billion dollar development of the vast mid-west region.

In the last few years huge road, rail and airport infrastructure improvements have begun in anticipation of a population increase of up to 60,000 by 2020.

But you don't have to wait for the projected growth because Geraldton has it all already.

Within a couple of minutes you can be enjoying a relaxing walk along one of

the magnificent beaches.

Or having a coffee or meal in one of the nearby cafés and restaurants.

Or you can participate in any sport from bowling to swimming to cycling to tennis and golf.

The facilities in Geraldton are amazing and the variety of community resources is as impressive as any regional centre in Australia.

You should see the wonderful Village we've created.

Our friendly Geraldton Village has twenty-nine attached and semi-detached units in the following three configurations:

1. Four (4), substantial three-bedroom, one bathroom units;
2. Twenty-two (22), two-bedroom, one bathroom units; and
3. Three (3), spacious single-bedroom, one-bathroom units.

The spacious accommodation within the two and three-bedroom units includes

an impressive entrance which leads to a delightful lounge/dining room, partially separate kitchen, a single bathroom/WC and a separate laundry.

Plus there's a single-vehicle garage under the main roof.

The internal finishes to the units include high-quality, wall-to-wall carpets and ceramic tiling.

The single-bedroom units are for rental accommodation only and comprise a lounge, kitchen and a combined laundry/bathroom/WC.

The Village is very private and secure and has plenty of visitor parking.

The more you examine what it has to offer, the more you'll love it.

To enable you to stay in your home longer, RSL Care WA offers personal care through their community care packages.

Naturally, further details can be provided on request.

All you have to do is ask.



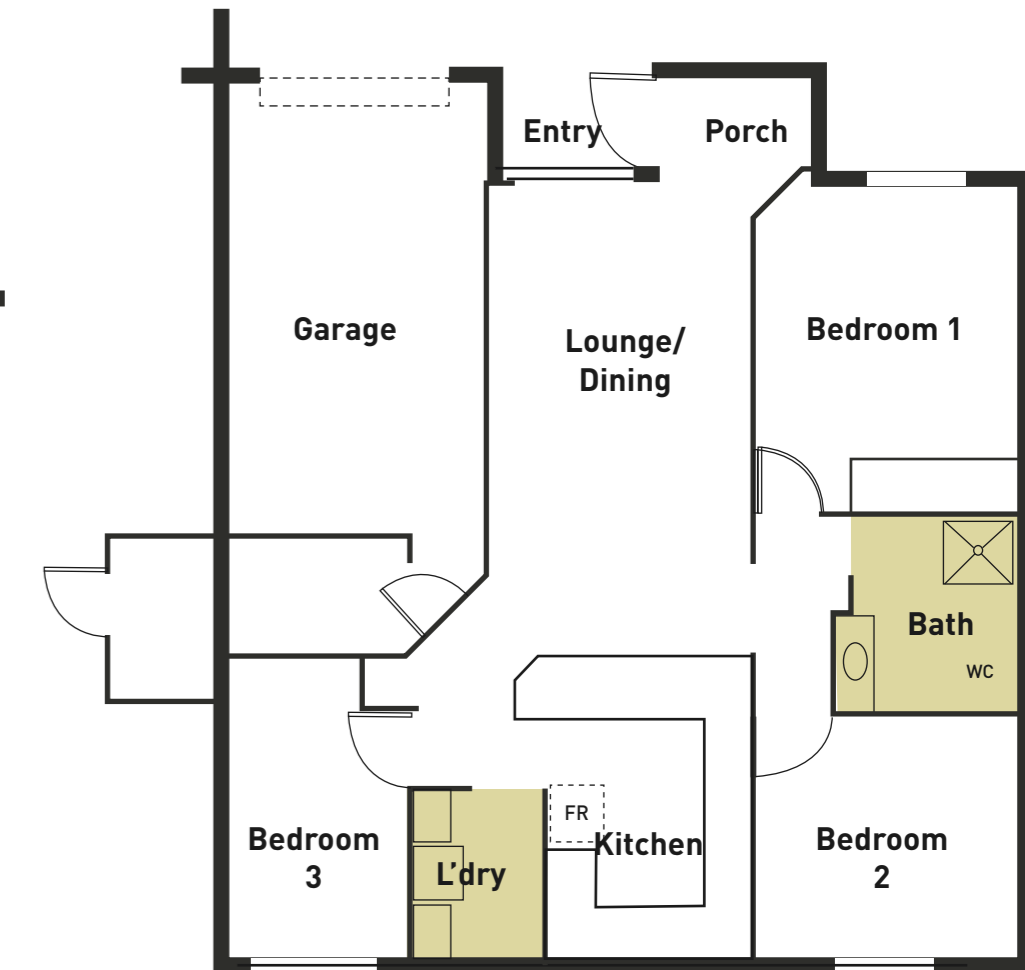
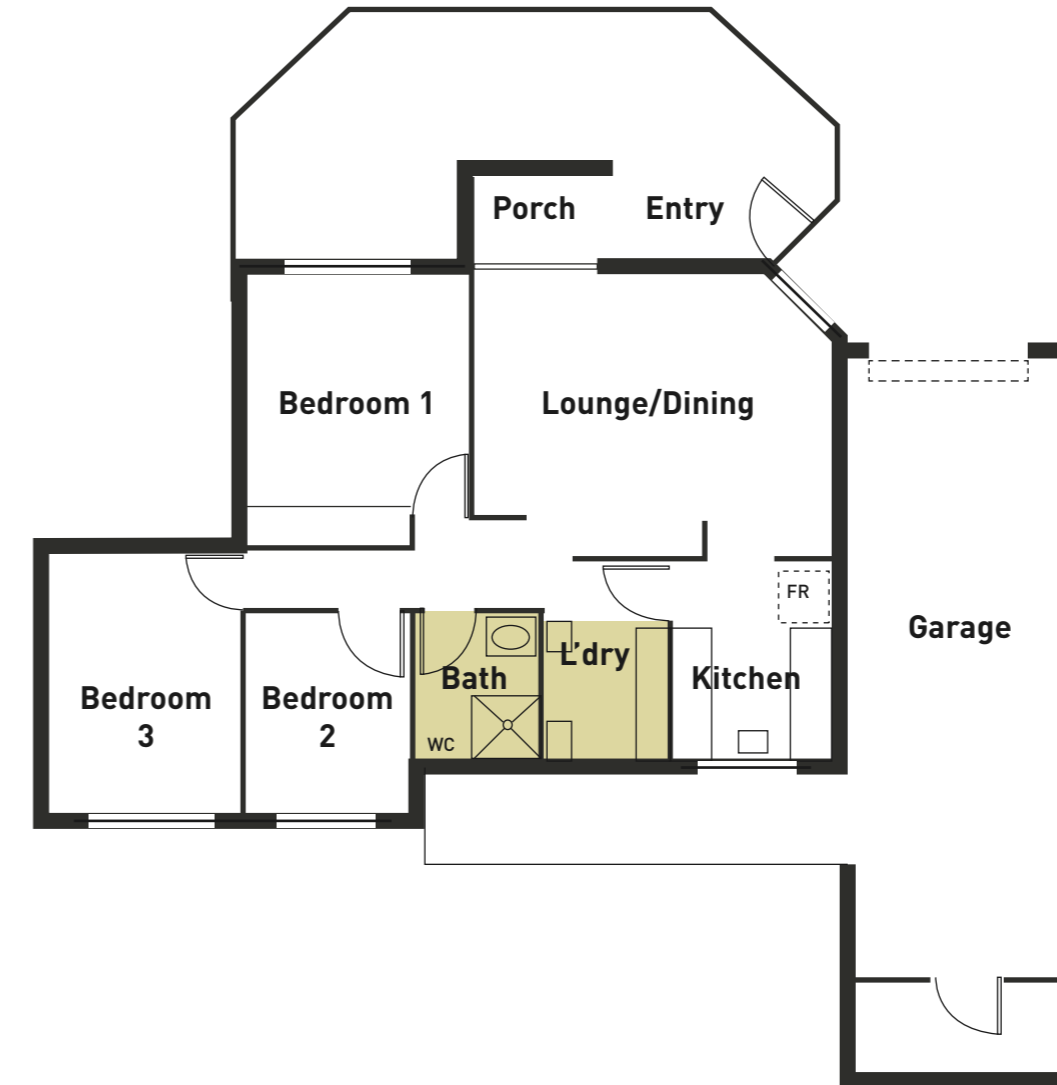
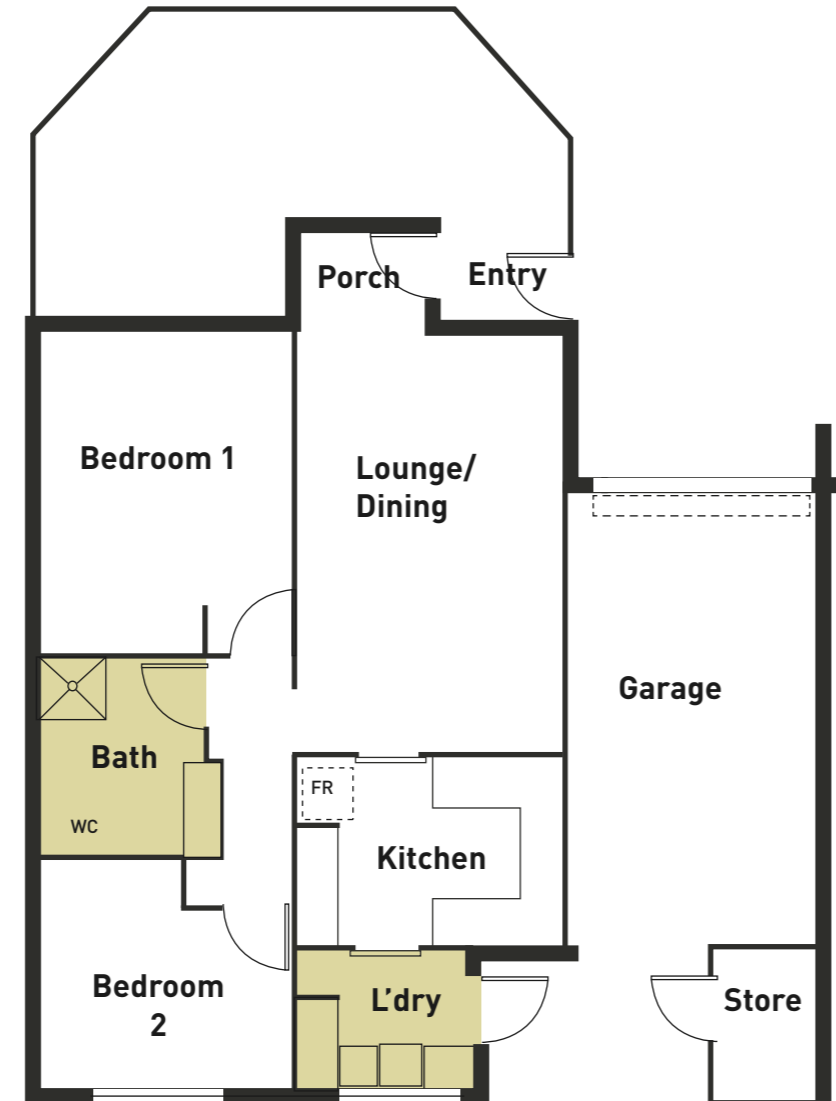
GERALDTON VILLAGE UNIT TYPE A.

UNIT TYPE B.

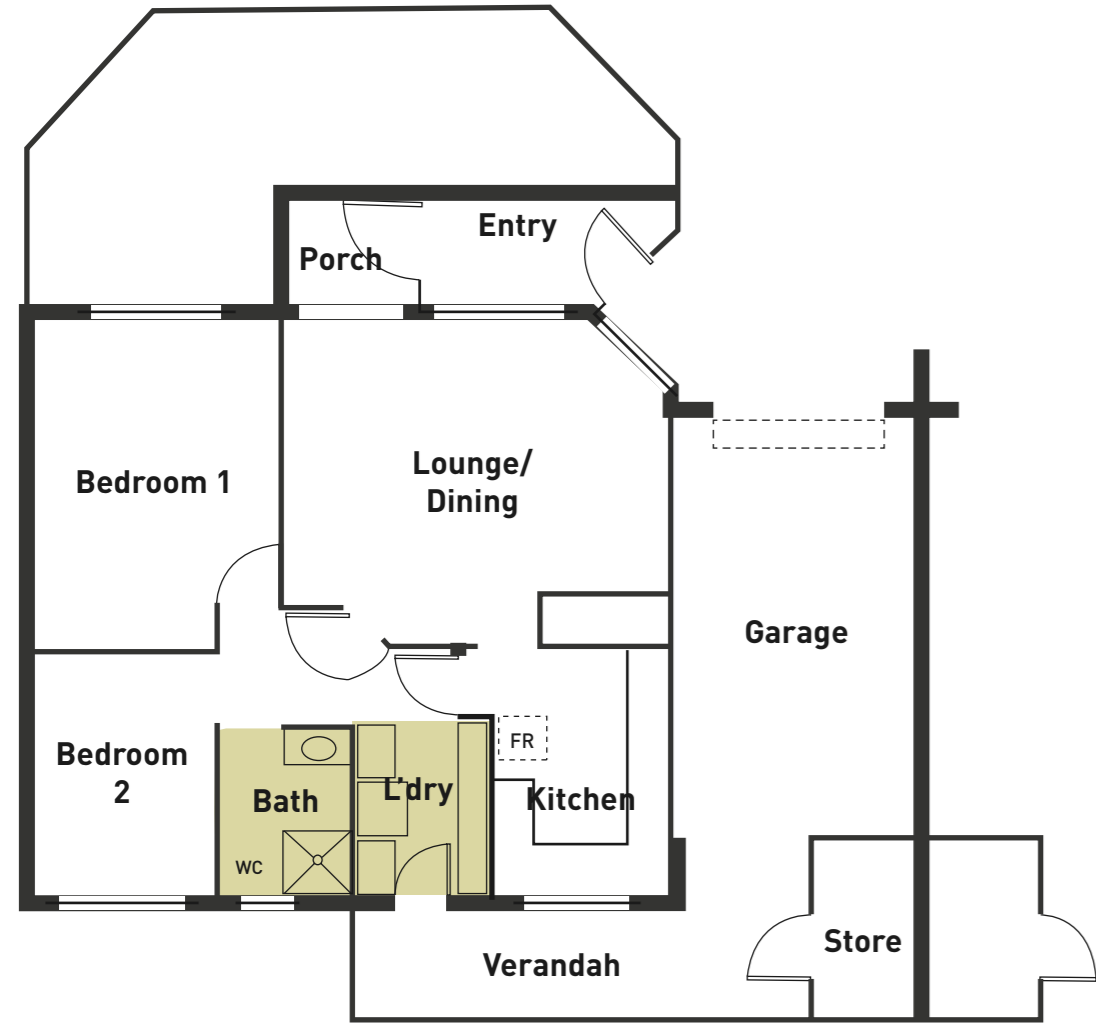
UNIT TYPE C.

Features of your Geraldton Village will include:

- Hot water system.
- Built-in robe to master bedroom only.
- Floor coverings throughout, carpets and tiles.
- Light fittings.
- Electric stove.
- Space for refrigerator.
- Kitchen exhaust system.
- Cabling and connection points for TV and telephone.
- Storage space including pantry and linen cupboard.
- Folding clothes line.
- Smoke detector.
- Flyscreens to windows, front door and back door.



UNIT TYPE D.



UNIT TYPE E.



GERALDTON VILLAGE OVERALL PLAN.



RSL Care WA - Geraldton Village

134 Gregory Street, Geraldton WA 6530

Phone: (08) 9964 1863

Fax: (08) 9964 4190

Email: corporate@rslwvh.com

Web: www.rslwvh.com