

Jurien Bay



Village

WELCOME TO JURIEN BAY VILLAGE.

OUR VISION IS TO PROVIDE AN EXCELLENT SERVICE FOR RETIREMENT VILLAGE LIVING.

RSL Care WA is committed to being the State's leader in high-quality retirement village living.

We seek to achieve this in a range of residential and community settings, of which Jurien Bay Village is one.

As you'll soon discover, the community caters for a broad spectrum of retirement village living, from all walks of life and we adhere strongly to the following values:

- We believe in maintaining a caring community of interest offering a wide range of services.
- We listen to the individuals within the Village in order that we can satisfy their needs fully as best we're able.
- We hold to the view that our services must always be excellent, if not exemplary.
- At all times we work to achieve industry best

practice and perform a market-leader role in every area of endeavour.

- We maintain that everything we do should be achieved by utilising resources efficiently with the help of the most highly skilled employees and volunteers we can attract; and
- We also have a profound belief in the importance of encouraging mateship and a genuine sense of community.

Access and equity are hallmarks of our approach to running the Village and all our policies and activities are transparent to ensure the highly professional Jurien Bay Village management team is totally accountable, at all times.

This document will introduce you to the lifestyle you can choose to enjoy here.

You'll love it.





EVERYTHING YOU NEED IS HERE OR VERY CLOSE BY.

Our Jurien Bay Village is conveniently located in this increasingly popular tourist town just two hours' drive from Perth.

The beaches are long and sandy, the clear warm water full of fish and there are many off shore reefs and islands to explore.

In season, 900 species of native flora make Jurien one of the most wildflower rich areas on earth.

Within minutes of the Village you'll find all the facilities and service you could want.

Jurien has its own splendid golf course and there are plenty of excellent shops close by.

The town is well established and offers local residents a surprisingly wide range of recreation, sporting and community Clubs and groups.

Retirement will never be boring here.

The famous Pinnacles Desert and Nambung National Park are also here for you to enjoy yourself or show off to your visiting friends and family.



Look at the Village attractions we've built-in.

There's a wide range of resources within the Village including :

1. A superb Community Centre for all the Village residents to use and enjoy.
2. The on-site Manager's Office and welcoming Reception Area to look after all your, and your guests', day-to-day queries.
3. A convenient hairdressing salon.
4. A Senior Citizens Office, spacious Meeting Rooms and a substantial Activity Room.
5. A fully-equipped gymnasium.
6. A superb, 18 x 11 metre swimming pool.
7. A complete, private library.

8. A delightful bar and coffee area.
9. A restaurant-quality dining room and commercial-standard kitchen.
10. A comfortable communal lounge room.
11. A well-appointed workshop.

What's more there are ten car parking bays within the Village and twenty-three immediately beyond its boundary. Plus there are thirty caravan and boat bays for those who may be tempted to lock- up and leave whenever the travel bug bites.

And finally, each unit has a Village-maintained front area and a private rear 'garden area', plus a separate store room.





JUST LOOK AT THE ENDLESS HOLIDAY LIFE WAITING FOR YOU HERE.

Jurien is no longer the sleepy fishing village it was last century. Today it's an energetic town with an interesting mix of friendly, working locals, active retirees and happy holiday-makers. It's a lovely community and, as you can see from this selection of images, it offers all the resources you need to make the most of life in this delightful coastal paradise.

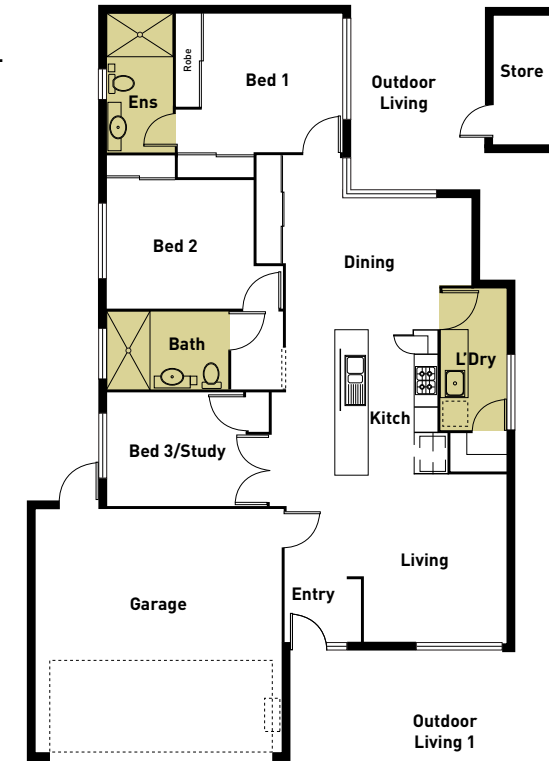


JURIEN BAY VILLAGE HOMES.

Features of your Jurien Village home.

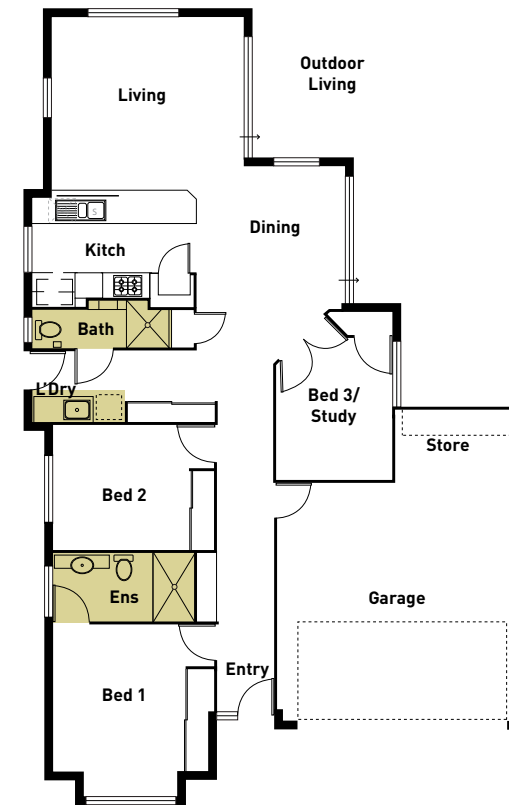
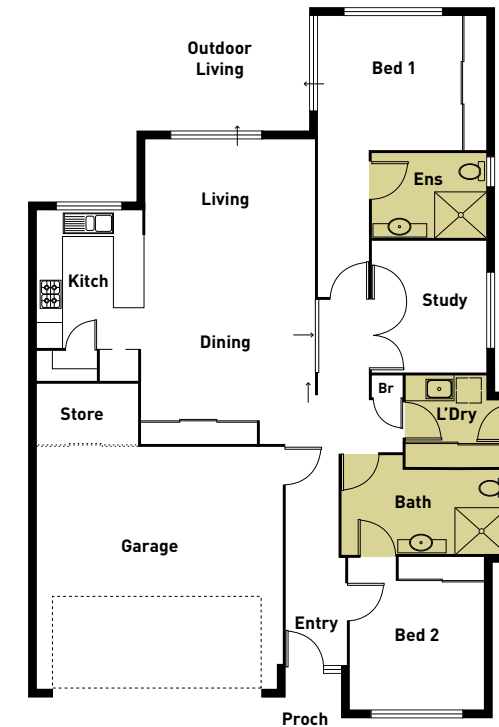
A modern design with all the convenience you could want.

- Front and rear verandah or porch.
- Flyscreens to all windows.
- Security door to front door.
- Insulated roof space.
- Built-in robes to bedroom 1 and 2.
- Built-in linen and broom cupboards in laundry.
- Washing machine plumbing and power points.
- TV aerial point.
- Telephone connection point.
- Air conditioning provided to main bedroom and lounge/living area.
- Stove, including four hotplates.
- Kitchen Range-hood.
- Bench and overbench cupboards to kitchen.
- Light points only. Fittings or down lights can be fitted at purchaser's expense.
- Power points to each room.
- Vanity basin, mirror and cabinet in bathroom.
- Bench cupboard in laundry.
- Emergency alarm system (not monitored).
- Carport parking.
- Rear courtyard.
- Internal design may vary.



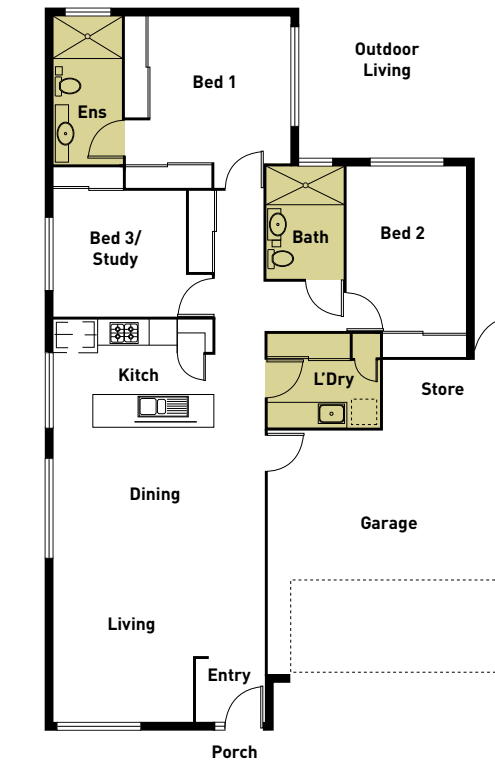
Type 1

Type 2



Type 3

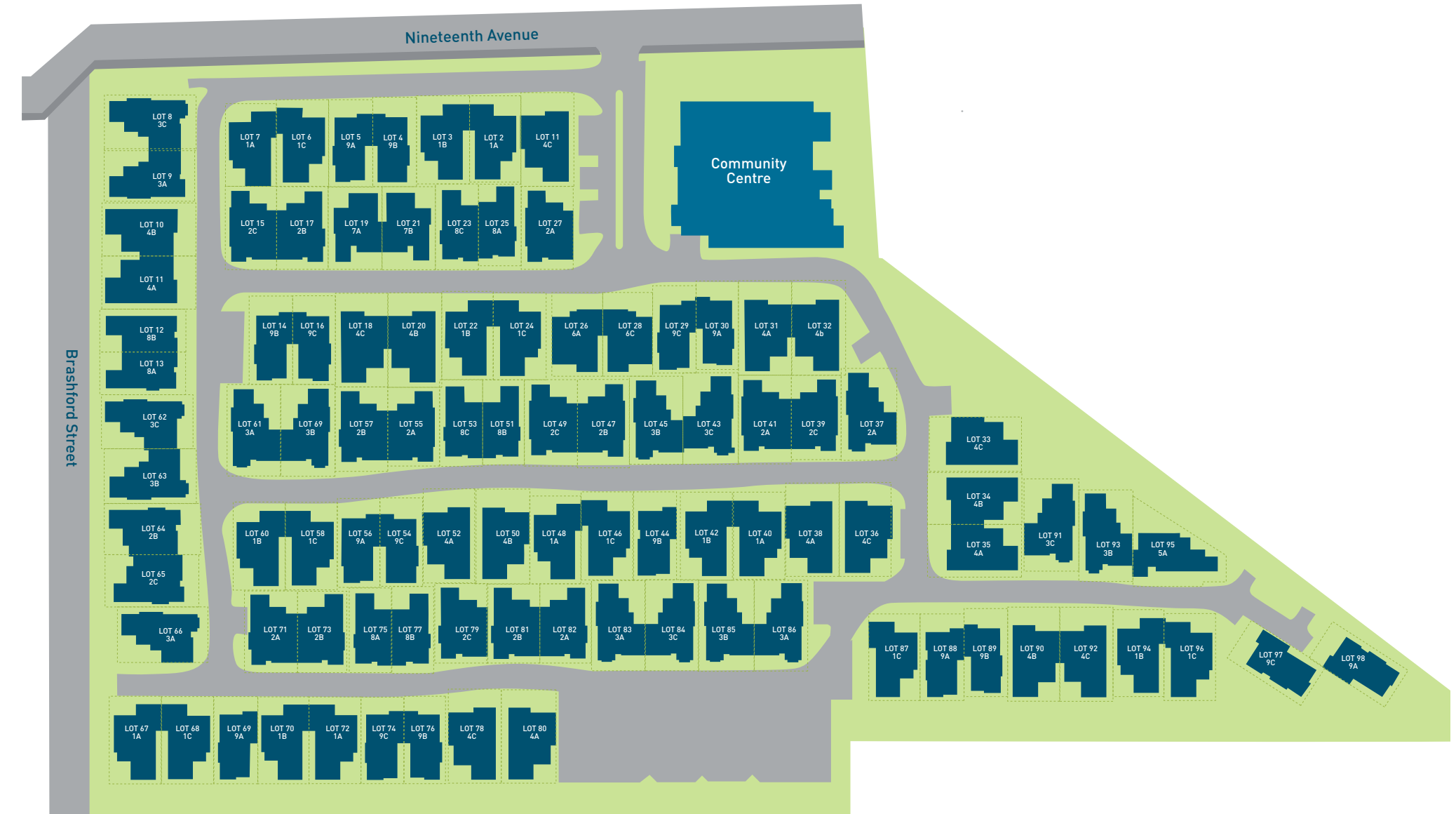
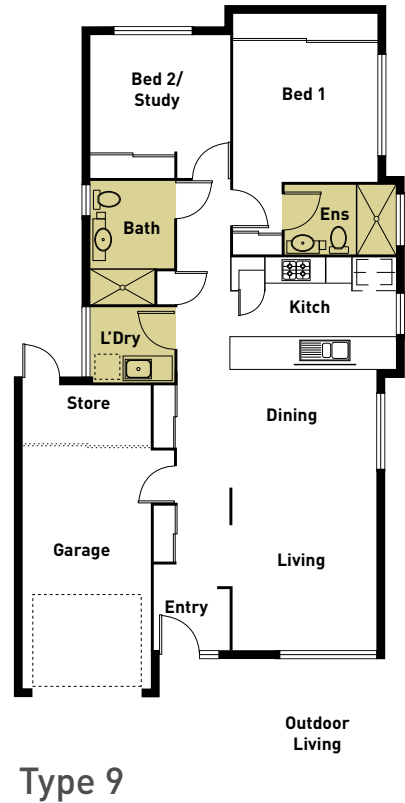
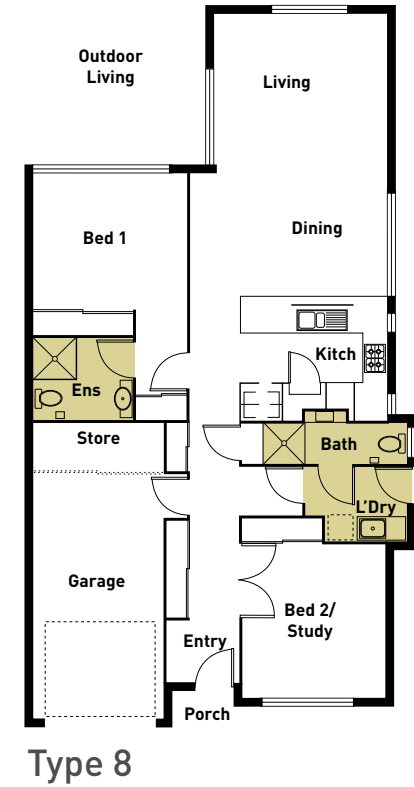
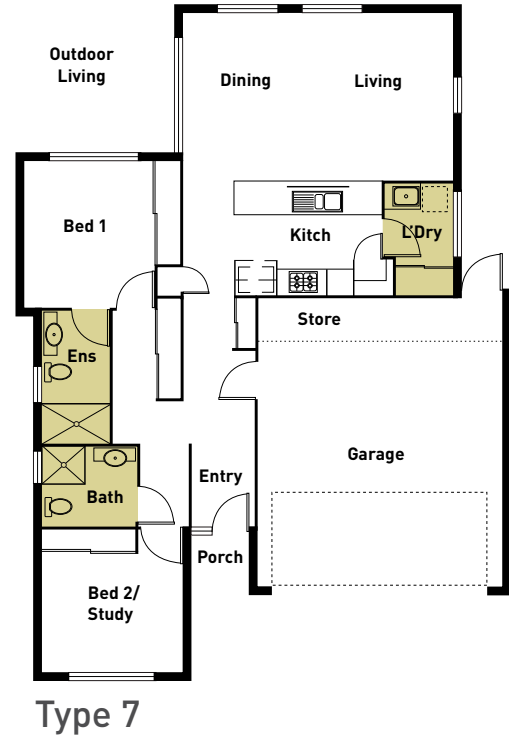
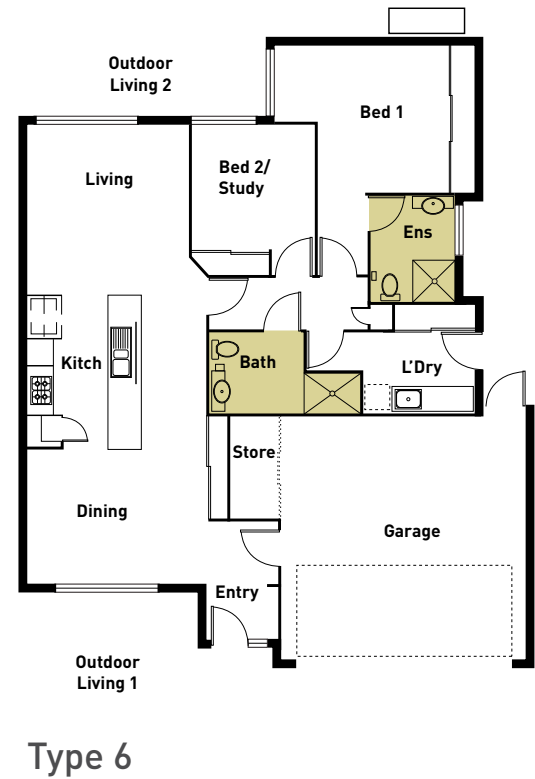
Type 4



Type 5

JURIEN BAY VILLAGE HOMES.

JURIEN BAY VILLAGE OVERALL PLAN.



RSL Care WA - Jurien Bay Village

51 Alexander Drive, Menora WA 6050

Phone: (08) 9370 0297

Fax: (08) 9370 2249

Email: kenh@rslwvh.com

Web: www.rslwvh.com