

Mandurah



Village

WELCOME TO MANDURAH VILLAGE.

OUR VISION IS TO PROVIDE AN EXCELLENT SERVICE FOR RETIREMENT VILLAGE LIVING.

RSL Care WA is committed to being the State's leader in high-quality retirement village living.

We seek to achieve this in a range of residential and community settings, of which our Mandurah Village is one.

As you'll soon discover, the community caters for a broad spectrum of retirement village living, from all walks of life and we adhere strongly to the following values:

- We believe in maintaining a caring community of interest offering a wide range of services.
- We listen to the individuals within the Village in order that we can satisfy their needs fully as best we're able.
- We hold to the view that our services must always be excellent, if not exemplary.
- At all times we work to achieve industry best

practice and perform a market-leader role in every area of endeavour.

- We maintain that everything we do should be achieved by utilising resources efficiently with the help of the most highly skilled employees and volunteers we can attract; and
- We also have a profound belief in the importance of encouraging mateship and a genuine sense of community.

Access and equity are hallmarks of our approach to running the Village and all our policies and activities are transparent to ensure the Mandurah Village's management team is totally accountable, at all times.

This document will introduce you to the lifestyle you can choose to enjoy here.

You'll love it.

Mandurah Village

EVERYTHING YOU NEED IS HERE OR VERY CLOSE BY.

Mandurah Village is conveniently located in the booming coastal town of Mandurah which is increasingly becoming Western Australia's favourite holiday destination.

The Village is close to Pinjarra Road and the Mandurah Bypass so access to all the local facilities and Perth and Bunbury is very easy.

Within minutes of the Village you'll find the best that Mandurah has to offer.

You can walk to Centro Shopping Centre, the town's largest, and a huge variety of major department stores.

Mandurah's Aquatic Centre is also a pleasant stroll away, as are several medical facilities.

And if you follow Pinjarra Road West for two minutes in a car, you'll reach all the waterside cafés, restaurants and shops.

Look at the facilities lifestyle you'll enjoy here.

The Village's central location makes it the ideal, safe and secure base for taking full advantage of the huge array of surrounding community resources and social and sporting clubs.

Outstanding security and amenities. Your security and peace of mind are our concern.

Your Villa will have:

1. An emergency call system (if requested).
2. A smoke detector.
3. Security locks to all opening windows.
4. Security doors.
5. A wheelchair-friendly design.

To enable you to stay in your home longer, RSL Care WA offers personal care through their community care packages.

Naturally, further details can be provided on request.

All you have to do is ask.

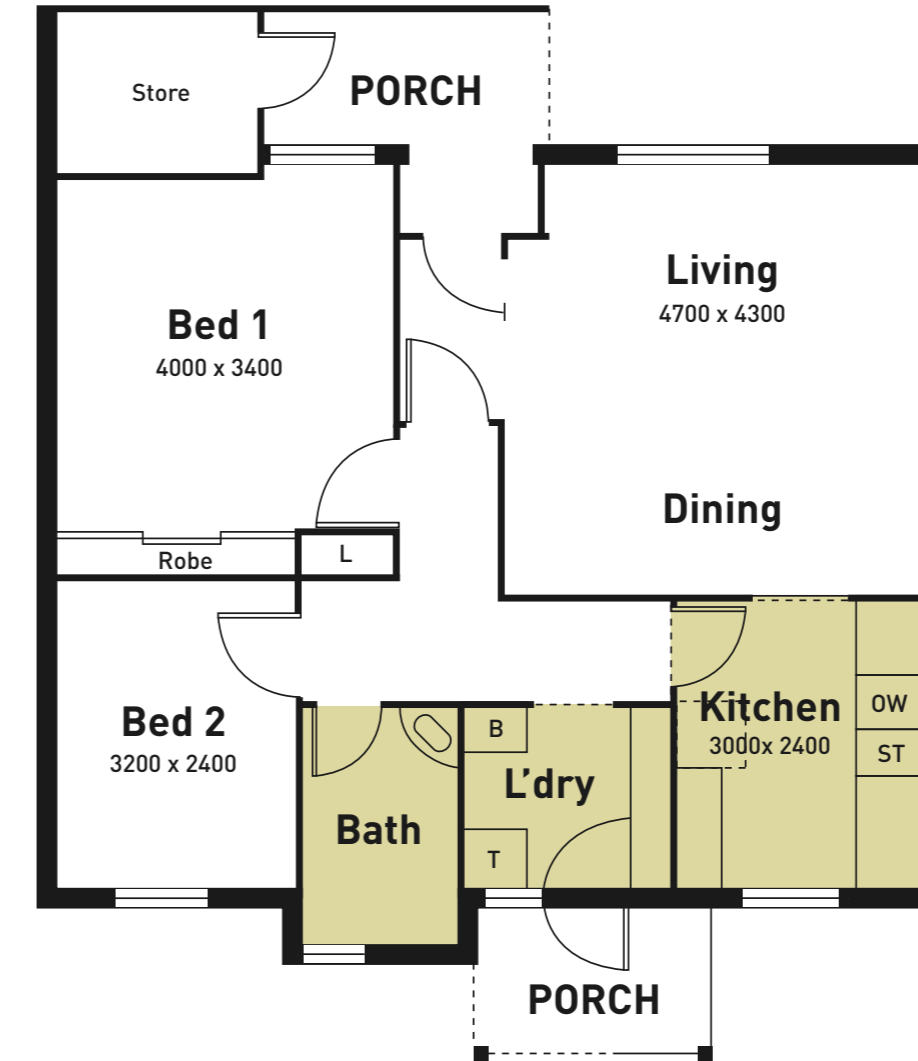
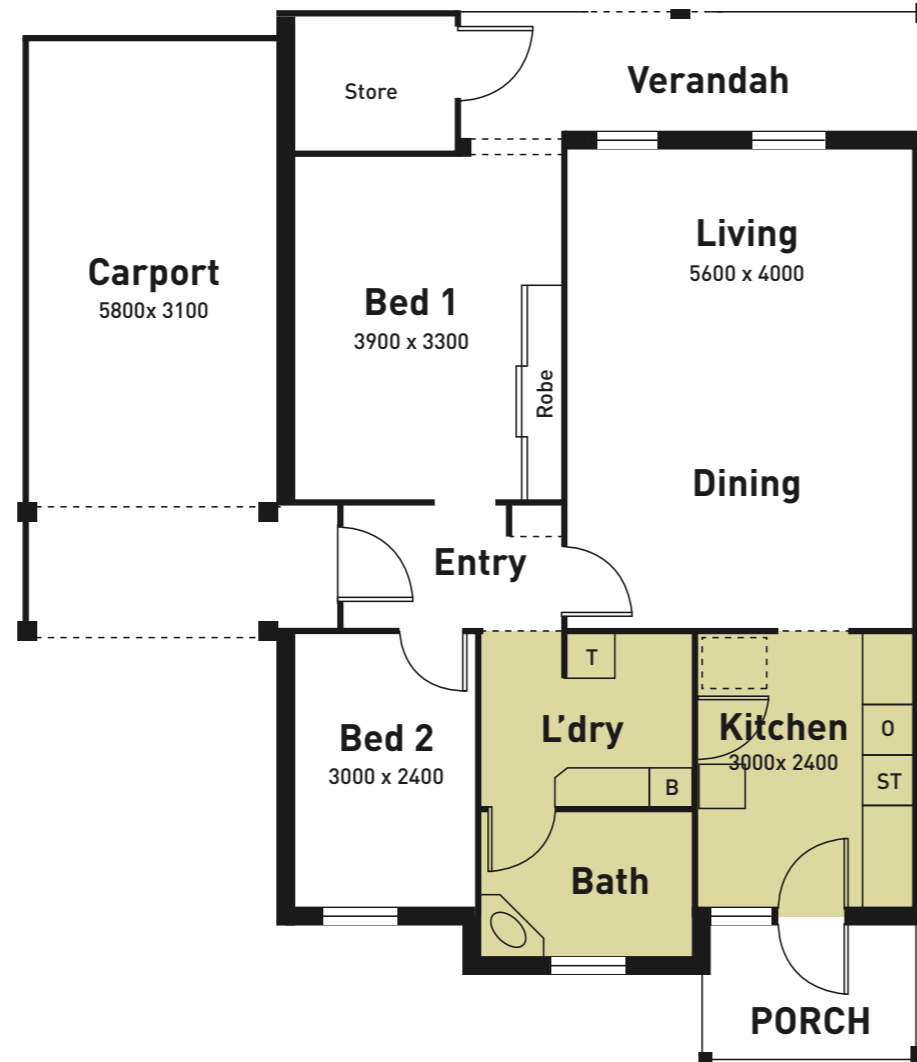


MANDURAH VILLAGE UNIT TYPE A.

MANDURAH VILLAGE UNIT TYPE B.

The features your Mandurah Village Unit will include:

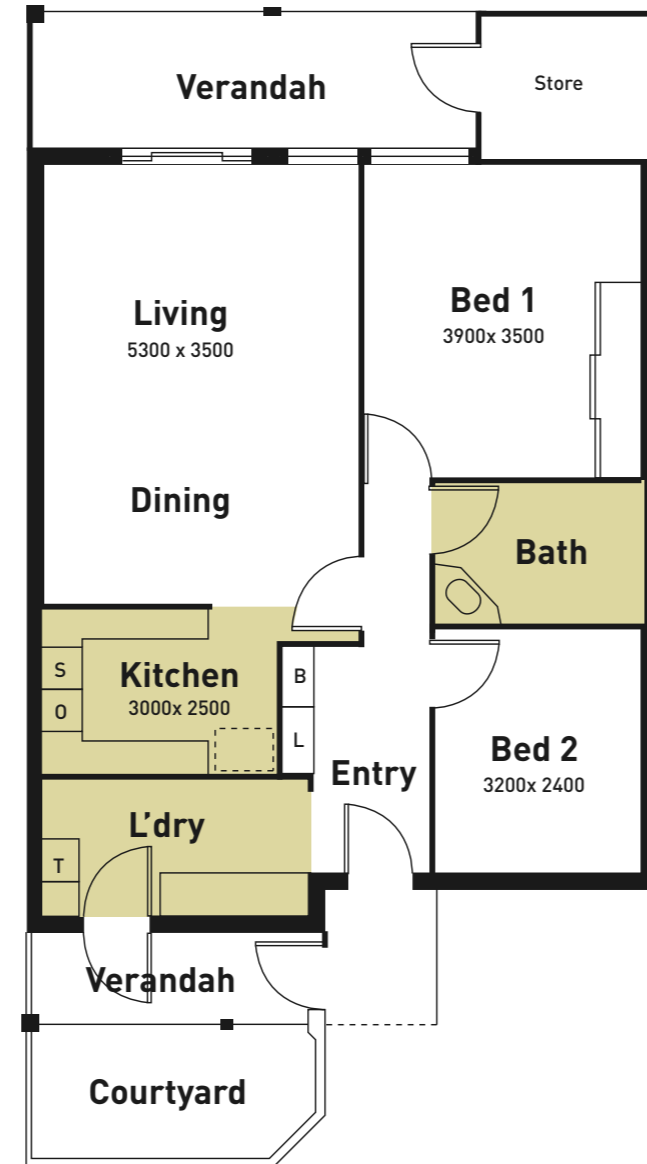
- Front porch and rear courtyard.
- Lockable external storeroom.
- Flyscreens to all windows.
- Flywire door to rear doorway.
- Insulated roof space.
- Living rooms and main bedrooms with Northerly aspect.
- Built-in robes to bedroom 1.
- Built-in linen and broom cupboards.
- Washing machine plumbing and power points.
- Two TV aerial points.
- Two telephone connection points.
- 15 amp power outlet for air conditioning.
- Elevated stove, including four hotplates.
- Kitchen exhaust fan.
- Bench and overbench cupboards to kitchen.
- Light fittings and power points to each room.
- Vanity basin, mirror and cabinet in bathroom.
- Bench cupboard in laundry.
- Emergency alarm system (not monitored).
- Carports to 'Type A' units only.
- Stand alone garages available for type B and C.



MANDURAH VILLAGE UNIT TYPE C.

The features your Mandurah Village Unit will include:

- Front porch and rear courtyard.
- Lockable external storeroom.
- Flyscreens to all windows.
- Flywire door to rear doorway.
- Insulated roof space.
- Living rooms and main bedrooms with Northerly aspect.
- Built-in robes to bedroom 1.
- Built-in linen and broom cupboards.
- Washing machine plumbing and power points.
- Two TV aerial points.
- Two telephone connection points.
- 15 amp power outlet for air conditioning.
- Elevated stove, including four hotplates.
- Kitchen exhaust fan.
- Bench and overbench cupboards to kitchen.
- Light fittings and power points to each room.
- Vanity basin, mirror and cabinet in bathroom.
- Bench cupboard in laundry.
- Emergency alarm system (not monitored).
- Carports to 'Type A' units only.
- Stand alone garages available for type B and C.



MANDURAH VILLAGE OVERALL PLAN.



RSL Care WA - Mandurah Village

22 Third Avenue, Mandurah WA 6210

Phone: (08) 9535 0200

Fax: (08) 9535 0202

Email: rslman@rslwvh.com

Web: www.rslwvh.com